



GRAND AVENUE
Primary and Nursery School



WELCOME PACK FOR EAL PUPILS

(Phonics Guide)



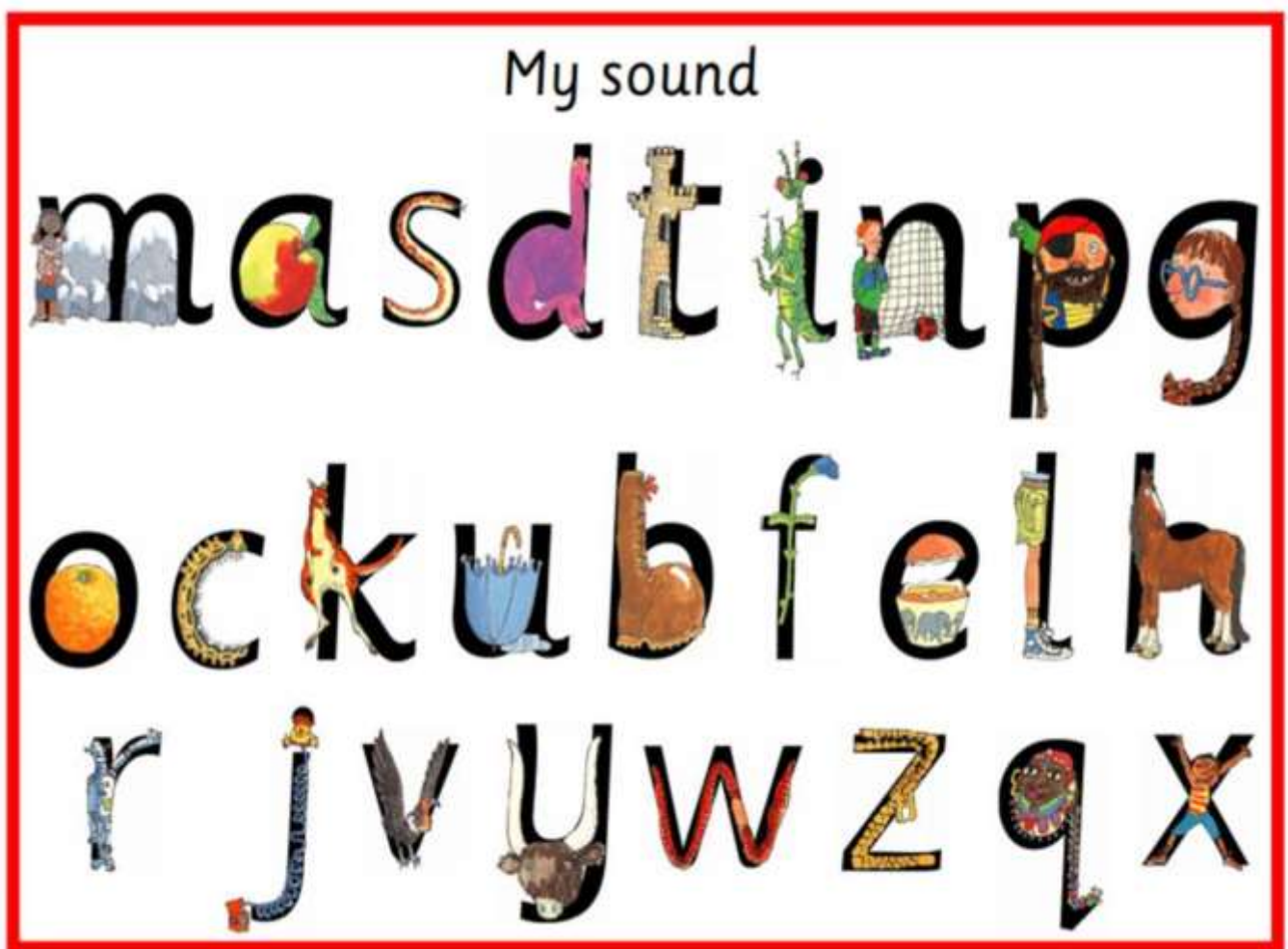
Grand Avenue Primary and Nursery School, Grand Avenue, Surbiton, Surrey KT5 9HU

Tel. 020 8399 5344 | School email: office@grandavenue.kingston.sch.uk

Read, Write, Inc

At Grand Avenue we follow the 'Read, Write, Inc.' programme. A guide is attached with recommended websites for parents:

- <https://ruthmiskin.com/en/find-out-more/parents/>
- <http://www.oxfordowl.co.uk>



The children will learn the sound that each letter makes. They will then learn to blend the sounds together to read words. They will also learn to hear the different sounds in words so that they can spell them.

With each letter sound there is a picture and matching phrase:

- m Maisie, mountain, mountain
- a round the apple, down the leaf
- s slither down the snake
- d round his bottom, up his tall neck and down to his feet
- t down the tower, across the tower
- i down the body, dot for the head
- n down Nobby, over his net
- p down the plait and over the pirate's face
- g round her face, down her hair and give her a curl
- o all around the orange
- c curl around the caterpillar
- k down the kangaroo's body, tail and leg
- u down and under, up to the top and draw the puddle
- b down the laces to the heel, round the toe
- f down the stem and draw the leaves
- e lift off the top and scoop out the egg
- l down the long leg
- h down the head to the hooves and over his back
- r down his back and then curl over his arm
- j down his body, curl and dot
- v down a wing, up a wing
- y down a horn, up a horn and under his head
- w down, up, down, up
- z zig-zag-zig
- q round her head, up past her earrings and down her hair
- x down the arm and leg and repeat the other side

At Grand Avenue we say that all the letters are “starting on the line-and”. The ‘and’ part is for the lead in stroke for the cursive letter form.

